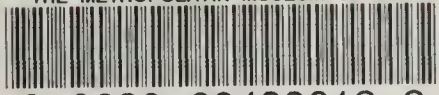


THE METROPOLITAN MUSEUM OF ART



3 0620 00488612 2

Kondo Galleries, Inc., New York.

119.8

UO

THE METROPOLITAN MUSEUM
OF ART

1944²

THE LIBRARY



PURCHASED WITH INCOME FROM
THE JACOB S. ROGERS FUND

111108



Digitized by the Internet Archive
in 2018 with funding from
The Metropolitan Museum of Art

NUMBER ONE HUNDRED SEVENTY-EIGHT

CHINESE ART

European Porcelains
Silver • Jewelry
Decorations

The Collection

of

C. C. VINES

Rocky Mount, North Carolina

The Estate

of

DIDRIK C. TRONDSEN

Glens Falls, New York

and from other collections

PUBLIC AUCTION SALE—NOVEMBER 11TH AT 2 P. M.

EXHIBITION—FROM NOVEMBER 7TH UNTIL SALE

• KENDE GALLERIES AT GIMBEL BROTHERS

33RD STREET AND BROADWAY

NEW YORK (1)

1944

NUMBER ONE HUNDRED SEVENTY-EIGHT

CHINESE ART

Lacquer and Teakwood Furniture

Screens • Panels

Porcelains • Bronzes

Swords • Silver

Fine Jades

A Replica of a Chinese Temple in Miniature

Star Sapphires • Jewelry

Jeweled and Gold Carved Ivory Elephant

European Porcelains

Sterling Silver

Decorations • Textiles • Chinese Rugs

The Collection

of

C. C. VINES

Rocky Mount, North Carolina

Sold by His Order

The Estate

of

DIDRIK C. TRONDSSEN

Glens Falls, New York

Sold by Order of John H. Barker, Attorney

and from other collections

PUBLIC AUCTION SALE—NOVEMBER 11TH AT 2 P. M.

EXHIBITION—FROM NOVEMBER 7TH UNTIL SALE

(Daily 10 A. M.—6 P. M.)

KENDE GALLERIES AT GIMBEL BROTHERS

33RD STREET AND BROADWAY

11th Floor

Telephone: PENNSYLVANIA 6-5185

NEW YORK (1)

1944

CONDITIONS OF SALE

The property listed in this catalogue will be offered and sold subject to the following terms and conditions:

1. The word "Galleries," wherever used in these Conditions of Sale means the Kende Galleries, Inc.
2. The Galleries have exercised reasonable care to catalogue and describe correctly the property to be sold, but they do not warrant the correctness of description, genuineness, authenticity or condition of said property.
3. The Galleries reserve the right to withdraw any article from sale for any reason whatsoever before the article is offered for sale.
4. Unless otherwise announced by the auctioneer at the time of sale, all bids are to be for the lot as a whole and as numbered in the catalogue.
5. The highest bidder accepted by the auctioneer shall be the buyer. In the event of any dispute between bidders, the auctioneer may, in his discretion, determine who is the successful bidder, and his decision shall be final; or the auctioneer may reoffer and resell the article in dispute.
6. Any bid which is not commensurate with the value of the article offered, or which is merely a nominal or fractional advance over the previous bid, may be rejected by the auctioneer, in his discretion, if in his judgment such bid would be likely to affect the sale injuriously.
7. The name and address of the buyer of each article, or lot, shall be given to the Galleries immediately following the sale thereof, and payment of the whole purchase price, or such part thereof as the Galleries may require, shall be immediately made by the purchaser thereof. If the foregoing condition, or any other applicable condition herein, is not complied with, the sale may, at the option of the Galleries, be cancelled, and the article or lot, reoffered for sale.
8. Unless the sale is advertised and announced as an unrestricted sale, or sale without reserve, consignors reserve the right to bid.
9. Except as herein otherwise provided, title will pass to the highest bidder upon the fall of the auctioneer's hammer, and thereafter the property is at the purchaser's sole risk and responsibility.
10. Articles sold and not paid for in full and not taken by noon of the third day following the sale may be turned over by the Galleries to a carrier to be delivered to a storehouse for the account and risk of the purchaser, and at his cost. If the purchase price has not been so paid

in full, the Galleries may either cancel the sale, and any partial payment already made shall be retained by the Galleries as liquidated damages, or they may resell the same without notice to the buyer and for his account and risk, and hold him responsible for any deficiency.

11. Property purchased will be delivered only on presentation of a receipted bill. The Galleries reserve the right to make delivery to any person presenting such receipted bill. If a receipted bill is lost before delivery, the buyer should immediately notify the Galleries.

12. If for any cause whatsoever any article sold cannot be delivered or cannot be delivered in as good condition as the same may have been at the time of sale, the sale will be cancelled without any liability to the Galleries and any amount that may have been paid on account of the sale will be returned to the purchaser.

13. In addition to the purchase price, the buyer will be required to pay the Federal, State and local taxes now or hereafter imposed upon the sale of the article or articles, unless the buyer is exempt from the payment thereof.

14. The Galleries, subject to these Conditions of Sale and to such terms and conditions as they may prescribe, but without charge for their services, will undertake to make bids for responsible parties approved by them. Requests for such bidding must be given with such clearness as to leave no room for misunderstanding as to the amount to be bid and must state the catalogue number of the item and the name or title of the article to be bid on. The Galleries reserve the right to decline to undertake to make such bids.

15. The records of the Galleries are in all cases to be considered final.

16. The Galleries will facilitate the employment of carriers and packers by purchasers, but will not be responsible for the acts of such carriers or packers in any respect whatsoever.

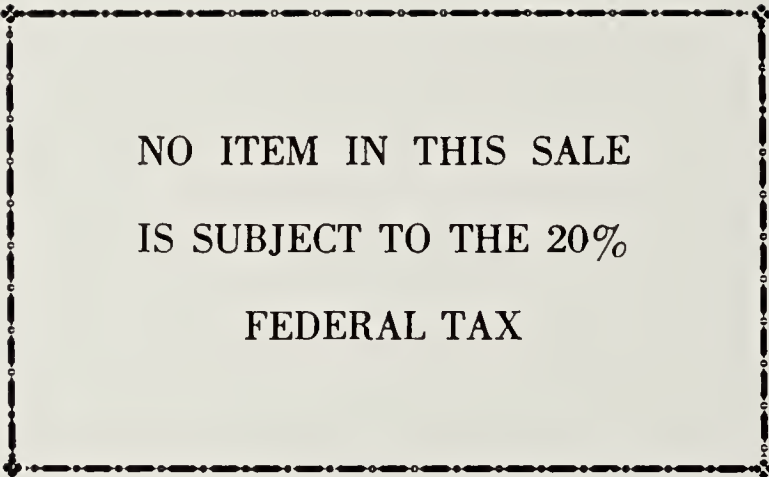
17. These Conditions of Sale cannot be altered except in writing by the Galleries or by public announcement by the auctioneer at the time of sale.

SALES CONDUCTED BY L. A. CRACO AND TH. J. MULDOON

KENDE GALLERIES AT GIMBEL BROTHERS
33RD STREET & BROADWAY • NEW YORK
11th Floor

Telephone PENNSYLVANIA 6-5185

Cable KENDARTGAL



NO ITEM IN THIS SALE
IS SUBJECT TO THE 20%
FEDERAL TAX

Your attention is invited to the Conditions of Sale on Pages 2 and 3
of this Catalogue.

SATURDAY, NOVEMBER 11TH, 1944, AT 2 P. M.

CATALOGUE NUMBERS 1 TO 191, INCLUSIVE

EUROPEAN PORCELAINS, GLASS, DECORATIONS

5' 1. ELECTRIC DESK CLOCK

In white and black onyx case. (*Gresham*).

Height, 5 $\frac{3}{8}$ inches

45' 2. NEEDLE PAINTED PICTURE IN CARVED TEAKWOOD FRAME, ON EASEL

Picture representing two setters, hunting, needle painted *en grisaille*, in elaborately carved and undercut teakwood frame and matching easel, in a design of iris flowers, reeds and clouds. (Some imperfections). (*Vines*).

Height, 5 feet 9 inches; width, 33 inches

26' 3. PAIR BRONZE BOOKENDS

Harriet Whitney Frishmuth, American: 1880-

Figures of nude athletes with hands against the books. Signed. Metal frames.

Height, 8 $\frac{1}{2}$ inches

9' 4. WEDGWOOD BLUE AND WHITE PORCELAIN VASE

Ovoid, with loop handle decorated with molded mythological figures, in white on blue ground. (Repaired).

Height, 8 inches

15' 5. SET OF THREE FRENCH DECORATED PORCELAIN VASES

Flattened, tapering, with scalloped edge, molded at base and border with scroll and shell design; decorated with flowers and butterflies in colors. (Repaired). (*Wolf*).

Heights, 5 $\frac{3}{8}$ and 6 $\frac{1}{4}$ inches

50' 6. VIENNESE DECORATED PORCELAIN BONBONNIERE

Globular bonbonniere, having ribbed sides and domed cover with rose finial, with a seated figure of a woman wearing black hat and dress with flower decoration, holding flower in her left hand. On an oval base (*New York Private Collector*).

Height, 7 $\frac{1}{2}$ inches

52' 7. VIENNESE DECORATED PORCELAIN BONBONNIERE

Similar to preceding. (Top cracked). (*New York Private Collector*).

32' 8. STAFFORDSHIRE BLUE AND WHITE DECORATED POTTERY PART DINNER SET

Comprising twelve dinner plates, platter and vegetable dish; decorated with landscapes at center and floral border; in blue and white. (14 pieces). (*Brooks*).

31- 9. **DECORATED PORCELAIN CANDLESTICK**

Two scroll arms and center light, supported by standing figure of draped *putto*, on domed and pierced, shaped base, richly decorated with molded branches of roses in colors outlined in gold. (*Vines*). Height, 13 $\frac{1}{8}$ inches

35- 10. **THREE DECORATED PORCELAIN MINIATURE VASES**

A Meissen vase, egg-shaped on scroll feet, decorated with molded flowers and rocailles; urn-shaped Meissen vase with spray flower decoration; and an ovoid covered vase on shaped base with scroll loop handles, having molded floral and roccaille decoration. (*Vines*). Heights, from 3 to 5 $\frac{1}{2}$ inches

30- 11. **PAIR VIENNA DECORATED PORCELAIN VASES**

Slender ovoid, with short neck, circular base and scroll loop handles; decorated with medallions at front, showing mythological scenes in colors, on cobalt blue ground with gold decoration, handles gilt. Signed Kaufman. (*Vines*). Height, 9 inches

44- 12. **MEISSEN DECORATED PORCELAIN BONBONNIERE AND CUP AND SAUCER**

Flattened globular bonbonniere, decorated with molded forget-me-nots, in colors, and a demi-tasse cup and saucer with molded flower bouquets, and branch handles. (*Brooks*).

70- 13. **VIENNESE DECORATED PORCELAIN CRINOLINE GROUP**

Group of lady and courtier. Lady wearing crinoline dress finely decorated with sprays of flowers, holding a fan in her right hand; courtier in rococo attire, holding a flower in his right hand. On oval base with moulded flowers. (Repaired). (*New York Private Collector*).

72 50 14. **PAIR VIENNESE DECORATED PORCELAIN SALTS**

Seated figures of a woman and a man, in Turkish attires, holding shell-shaped salts before them. On irregular bases with moulded floral decoration. (Chipped.) (*New York Private Collector*). Heights, 6 $\frac{1}{2}$ to 7 $\frac{1}{2}$ inches

9- 15. **FOUR GLASS VASES AND TWO COMPOTES**

Four cone-shaped vases, a pair with black and white ring decoration, the other pair with cut floral design and a pair of compotes with tooled gold borders and swirled baluster shaft on circular base. (*New York Private Collector*). Heights, from 5 $\frac{1}{4}$ to 6 inches

125- 16. **COLLECTION OF DECORATIVE GLASS OBJECTS**

Comprising glass vase in shape of sea-shell; globular vase of yellow mottled glass; globular clear glass bottle with stopper in shape of star; and two cut glass blossoms (some slight chips). (5 pieces). (*Vines*).



17

36'
17. EIGHT CONTINENTAL DECORATED PORCELAIN FIGURES

Figures of monkeys in rococo costumes, forming band, playing various musical instruments; on roccaille base. (Some repaired). (Brooks).

Heights, from 4 to 5½ inches

[SEE ILLUSTRATION]

15 50
18. CUT GLASS PITCHER, MOUNTED IN SILVER

Tapering, cylindrical, with loop handle; star and diamond pattern cut, having silver mounting at rim in wrought grapevine design; Monogrammed. (New York Private Collector).

Height, 12 inches

19' 19. **TWO DECORATED GLASS VASES**
Both ovoid; one having cylindrical, tapering neck, decorated with bird and flowers in enamel colors on rose overlay; the other of blue glass with floral decoration in enamel colors. (*Woolf*). *Heights 12¼ inches*

M- 20. **CUT CRYSTAL DECANTER**
Quadrangular, with slant shoulder and short neck, having large rectangular stopper; cut with ribbed stripes. (*Vines*). *Height, 8½ inches*

32⁵⁰ / 21. **LALIQUE GLASS VASE**
Globular, with short neck, having figures of nudes, holding flower garlands, as handles; of smoke colored glass. Signed under foot. Together with tapering octagonal olive green flower vase (the latter chipped). (*Vines*). *Height, 4¾ inches and 12 inches*

27¹² / 22. **LALIQUE GLASS BOWL**
Circular bowl, having wide rim; cut with butterflies and sunflowers at bottom, in deep blue glass. Signed. (*Vines*). *Diameter, 15½ inches*

130' 23. **FINE CUT CRYSTAL TABLE SERVICE**
Comprising twelve water goblets, eleven wines, ten sherrys, thirteen cocktails, eleven champagnes, twelve cordials, twelve tumblers, twelve juice glasses, decanter, bottle and pitcher; bell-shaped cup on hexagonal shaft and circular base; cut with diamond and palmette pattern, sunburst at base. (96 pieces). (*Vines*).

SILVER, JEWELRY, BIBELOTS

7' 24. **FOUR DECORATIVE OBJECTS**
Comprising Chinese covered pewter bowl, letter opener with bronze handle, Schubert Memorial plaque on onyx base; and an agate snuff bottle. (*Trondsen*).

6- 25. **COLLECTION OF IVORY OBJECTS**
Comprising four paper knives, carved and pierced, two with silver mountings; two carved and pierced paper clips and two pins, and a medallion on silk cord. (9 pieces). (*Trondsen*).

13- 26. **COLLECTION OF PAPERKNIVES, BOOK MARK AND PENCIL**
Comprising paper knives of various designs, partly enameled, one of lapis lazuli; bookmark and letter opener with onyx handles and an enameled pencil. (8 pieces). (*Trondsen*).

18- 27. **SIX SILVER AND ENAMEL SPOONS**
Finely enameled with rose enamel. In leatherette case. (*Trondsen*).

8'

28. **TWO STERLING SILVER AND A SILVER PLATED SWEETMEAT DISH**
All with pierced sides, two with hinged handles. (*Trondsen*).

11'

29. **COLLECTION OF STERLING SILVER AND METAL SERVING UTENSILS**
Comprising spoons, forks, meat server, etc. Monogrammed. (5 pieces). (*Trondsen*).

13'

30. **COLLECTION OF STERLING SILVER AND SILVER SERVING UTENSILS**
Comprising asparagus and tart server, ladle, crumb tray and sugar tong. (5 pieces). (*Trondsen*).

9'

31. **COLLECTION OF SPOONS AND FORKS**
Comprising nine sterling silver and silver spoons of various sizes and designs; two Swedish horn and one wooden spoon; six sterling silver dessert forks. (18 pieces). (*Trondsen*).

13'

32. **COLLECTION OF SILVER AND STERLING SILVER SPOONS**
Of various designs and makes, some enameled. (11 pieces). (*Trondsen*).

14'

33. **STERLING SILVER CAKE PLATE AND A LADLE**
Circular plate with reeded edge, pierced in scroll design; and a ladle chased with rose design. (*Gresham*).

12'

34. **COLLECTION OF SILVER OBJECTS**
Comprising three napkin rings, four salts, and a sweetmeat dish; of various designs. (8 pieces). (*Trondsen*).

50'

35. **SILVER PLATED CRUMB TRAY, COASTER AND SWEETMEAT DISH**
Circular crumb tray, with hinged top and wooden handle; engraved with crest. Circular coaster, chased in floral design; and a shell-shaped sweetmeat dish. (*Gresham*).

45'

36. **STERLING SILVER WATER PITCHER**
Tapering, octagonal wide spout, with loop handle, engraved with laurel wreath. Monogrammed. Weight, approximately 16 ounces. *Height, 9 inches*

14'

37. **ENGLISH SILVER CANDLESTICK**
Birmingham, 1908
Egg-shaped bowl on curved paw feet, with flattened loop handle, fitted with bell-shaped candle holder and compartment with hinged top, set with English coin and showing inscription. (*Trondsen*). *Length, 6½ inches*

14'

38. **COLLECTION OF SILVER OBJECTS**
Comprising three mesh bags of various sizes, two silver boxes, a bracelet, a brooch and a pair of cuff links, made from Swedish coins. (9 pieces). (*Trondsen*).

1750

39. SILVER CREAMER AND SUGAR BOWL

Urn-shaped, with loop handle, on circular foot; engraved with flower festoons and monogrammed. Gilt interior. (Trondsen).

11-

40. SILVER PLATED COFFEE PITCHER

Tapering, cylindrical, short spout, scroll loop handle, hinged domed top with vase finial; wrought at edge and bottom with roses and engraved with flowers and geometrical design around periphery. (Nealon). Height, 13½ inches

6-

41. SILVER PLATED COFFEE PERCOLATOR

Cylindrical with domed, knobbed cover, curved legs, ball feet; fitted with spirit lamp. (New York Private Collector). Height, 15¾ inches

5250

42. STERLING SILVER PITCHER

Bulbous, with short spout, loop handle, on circular base; beaded edge; Monogrammed. Weight, approximately 24 ounces. (Gresham). Height, 7 inches

3750

43. GEORGIAN SHEFFIELD PLATED CRUET

Circa 1820

Tre-foil base with gadrooned edge, on curved feet, supporting three stands and triangular reeded center shaft with loop handle; fitted with three cut crystal bottles. (Rubbed). (Gresham).

15-

44. STERLING SILVER FLOWER VASE

Tapering, cylindrical, on stepped circular base. Weight, approximately 20 ounces. Height, 18 inches

20-

45. PAIR SHEFFIELD SILVER PLATED CANDLESTICKS

XVIII Century

Quatrefoil base, tapering paneled shaft and flattened bell-shaped paneled candle holder. (Rubbed). (Gresham). Height, 11¾ inches

10250

46. SHEFFIELD PLATED TUREEN

Oval, with upright loop handles, domed cover with acorn finial, on oval platter with upright scroll handles; tureen and platter having beaded edge; crested. (Gresham). Length, 16 inches

4250

47. STERLING SILVER FLATWARE SET

Comprising six dinner, six salad forks, twelve teaspoons, six butter spreads, six dinner knives, spatulate handles, chased in rocaille pattern. Together with twelve demi-tasse spoons, of different design. The latter monogrammed. Weight, approximately 41 ounces. (8 pieces). (Gresham).

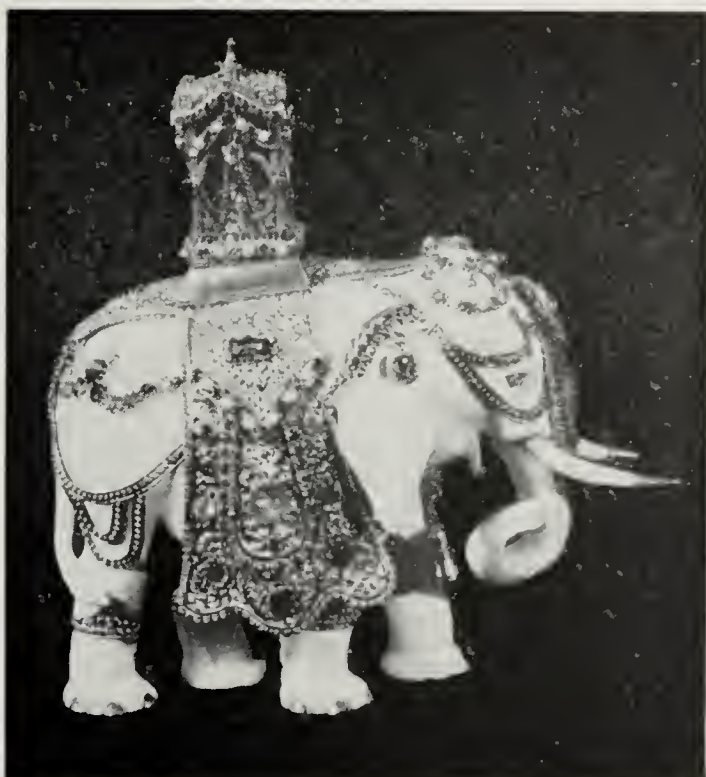
- 7-
- 6-
- 18-
- 11-
- 28-
- 225-
- 875-
- 365-
- 175-
48. **STERLING SILVER VANITY CASE, MANICURE SET AND A MIRROR**
 Oblong vanity case on chain, monogrammed; manicure set with sterling silver handles, in leatherette case, monogrammed; and a steel pocket mirror. (*Trondsen*).
49. **COLLECTION OF PINS**
 Comprising gold baby pin set with pearls, silver gilt brooch, two metal brooches, and a coral pendant. (5 pieces). (*Trondsen*).
50. **COLLECTION OF GOLD AND SILVER AND ENAMEL CUFF LINKS AND BUTTONS**
 Partly fourteen, partly ten kt. gold, all monogrammed, some with enamel; together with gold clip. (16 pieces). (*Trondsen*).
51. **GOLD FILLED LADY'S WRIST WATCH, SILVER AND ENAMELED PICTURE CASE AND LOCKET ON CHAIN**
 (*Trondsen*).
52. **COLLECTION OF JEWELRY**
 Comprising one red and one pink coral necklace; two glass bead chains; and agate bead chain; agate bracelet, brooch and ring; and a metal bead chain. (9 pieces). (*Trondsen*).
53. **STAR SAPPHIRE BRACELET**
 Linked mounting, containing six star sapphires, weighing approximately 29 cts. (*Vines*).
54. **GENTLEMAN'S STAR RUBY RING**
 Ruby weighing approximately 3.50 cts. (*Vines*).
55. **LADY'S STAR SAPPHIRE RING**
 Sapphire weighing approximately 14 cts.
56. **LADY'S STAR SAPPHIRE RING**
 Sapphire weighing approximately 41 cts.

725-

57. **IMPORTANT JEWELLED AND 18 KT. GOLD-MOUNTED CARVED IVORY
ELEPHANT**

Sacred white elephant, adorned with gold saddle-cloth and ceremonial drapery and headdress, set with numerous pink, blue and white sapphires, tourmalines, zircon, seed pearls, star sapphires and topaz. A golden bell is suspended from the trappings beneath the neck and a golden shrine is carried on his back. The shrine is studded with pink and white sapphires and seed pearls (one stone missing). Gold-tipped feet and tusks. (*Vincs*).

[ILLUSTRATED ON OPPOSITE PAGE]



57

13



58

ORIENTAL ART
CHINESE PORCELAINS, BRONZES, IRON, SILVER,
DECORATIONS

60' 58. **ORIENTAL LOWESTOFT DECORATED PORCELAIN TEA SERVICE**

XVIII Century

Comprising teapot, creamer, covered sugar bowl, eleven cups, six saucers, eight compote plates and a circular dish; decorated with flower sprays in gold on white ground. (Some chipped, some cracked). (30 pieces). (*Brooks*).

[SEE ILLUSTRATION]

25' 59. **CHINESE DECORATED PORCELAIN JAR**

Globular, decorated with peonies, lotus flower and butterflies and ornamental borders, in enamel colors on white. Teakwood cover. (*Vines*).

Height, 8½ inches



60

80-
60. **IMPORTANT SATSUMA DECORATED PORCELAIN DINNER SERVICE**

Comprising fourteen dinner, fourteen service, fourteen bone, fourteen soup, fourteen bread and butter, fourteen compote plates, fourteen bouillon and fourteen teacups; twenty-eight saucers, fourteen demi-tasse cups, three platters, three vegetable dishes, sauce boat, teapot, coffee pot, sugar bowl and creamer. Decorated with tooled gold edges and delicately painted floral border of the mille-fleur pattern, gilt handles and edges. (*Vines*). (165 pieces). Note: The above described service was made to special order and is of outstanding quality and rareness.

[SEE ILLUSTRATION]

75-
61. **CHINESE DECORATED PORCELAIN CELADON VASE**

Ovoid, with short neck, decorated with dragon and fish on a Celadon ground incised with vase and flowers. (*New York Private Collector*).

Height, $8\frac{3}{4}$ inches

75-
62. **CHINESE DECORATED PORCELAIN GINGER JAR MOUNTED AS A LAMP**

Bulbous, decorated with mille-fleur pattern in enamel colors. Fitted for electricity. Teakwood stand. (*Vines*).

Height, $13\frac{1}{4}$ inches



64

63

40-

63. CHINESE DECORATED PORCELAIN CELADON BOWL

Ch'ien Lung

Deep footed, circular bowl, decorated with incised flowers and fret ornaments. (Vines). Diameter, 10 $\frac{3}{8}$ inches

[SEE ILLUSTRATION]

35-

64. CHINESE CELADON VASE

Ch'ien Lung

Flattened, quadrangular, with loop handles. Invested with Celadon glaze. Teakwood stand. (Vines). Height, 9 inches

[SEE ILLUSTRATION]

17⁵⁰-

65. ORIENTAL DECORATED PORCELAIN COVERED BOWL AND TABLEWARE

Comprising large covered Satsuma bowl and five Satsuma teacups, decorated with landscapes and figural scenes in medallions, ornaments and flowers, in colors and gold; melon-shaped pottery teapot, and a grey flower-shaped teacup. (Some imperfections). (8 pieces).



66

3752
66. CHINESE BLUE AND WHITE DECORATED PORCELAIN VASE

Ch'ien Lung

Ovoid, with slender neck and bulbous mouth, on circular foot, decorated with flower branches and petal and fret ornaments in bands. On teakwood stand. (Vines). Height, 10½ inches

[SEE ILLUSTRATION]

43 50
67. CHINESE DECORATED PORCELAIN BOTTLE

Globular, with high funnel neck, decorated with handsomely painted landscape of mountainous country by a lake with figures and animals, around body. (Vines). Height, 12 inches

32 50
68. CHINESE DECORATED PORCELAIN VASE MOUNTED AS A LAMP

Bottle-shaped, with high cylindrical neck, decorated with molded figures of Sages in clouds; on teakwood stand. Fitted for electricity. (Vines). Height, 18 inches

15'

69. **BALINESE BRONZE BELL**

Flattened, bulbous, with ringed handle chased with geometrical ornaments. Traces of green patina. *Height, 6 $\frac{7}{8}$ inches*

21'

70. **CHINESE BRONZE IRON AND DISH**

Iron of oval shape, with wooden handle chased with dragons, and the dish of square tapering shape, with dragon head handles chased with ornaments.

27⁵⁰

71. **CHINESE BRONZE LIBATION CUP**

T'ang
Bulbous body, wide, flaring lip, flattened upright loop handles, three curved legs; traces of molded ornaments noticeable under a layer of greenish incrustation. *Height, 5 $\frac{1}{4}$ inches*

20'

72. **SIAMESE BRONZE BUDDHA**

Figure of Buddha seated cross-legged in the position of meditation, in a draped robe and crown; on triangular base. Oxydized surface showing traces of green patina. *Height, 6 $\frac{1}{8}$ inches*

22⁵⁰

73. **CHINESE BRONZE FIGURE OF BUDDHA**

Seated figure, with right hand resting on knee. *Height, 8 $\frac{1}{2}$ inches*

34'

74. **INDIAN BRONZE FIGURE OF BUDDHA**

Seated figure, with crossed legs, wearing crown and seated on lotus. *Height, 10 $\frac{1}{2}$ inches*

5'

75. **CHINESE BRONZE BELL**

Having scalloped edge and twin dragon handle, engraved with geometrical ornaments in bands. (*Vines*). *Height, 9 $\frac{5}{8}$ inches*

17'

76. **PAIR CHINESE BRONZE VASES**

Ming
Globular, on tapering, ringed base, having ringed high neck and loop dragon's head handles at shoulder; having incised archaic ornaments, in bands around body, base and neck. (Bottom missing). (*Vines*). *Height, 8 $\frac{3}{8}$ inches*

25'

77. **PAIR CHINESE BRONZE VESSELS**

T'ang
Figure of a stylized dove over an axel with two wheels, carrying an ovoid ringed vase on the back; greenish incrustation. *Height, 3 $\frac{1}{2}$ inches*

11'

78. **PAIR CHINESE BRONZE VASES**

Bulbous body, supported by cylindrical shaft and flaring base, having stepped shoulder, high, flaring neck and cylindrical lip, dragon's head loop handles at neck; incised at base, neck and lip with archaic ornaments. (Dented; bottom missing). (*Vines*). *Height, 13 inches*

21" 79. **ORIENTAL BRONZE VASE AND INCENSE BURNER**

Vase in shape of a tree trunk, enhanced with molded branches; two figures at the irregular base; and a quadrangular incense burner on cylindrical legs, upright loop handles, chased with dragons and fret ornaments. Teakwood stand and cover. (*Vines*).
Heights, $6\frac{3}{4}$ and $10\frac{5}{8}$ inches

35" 80. **FOUR TIBETAN AND CHINESE BRONZE FIGURES**

XVI and XVII Centuries

Two Tibetan Buddhistic figures, one gilt, seated on lotus throne; the other, a standing figure. And two Chinese seated Buddhas. (*Vines*).

Heights, from $2\frac{1}{2}$ to 4 inches

21" 81. **CHINESE COPPER INCENSE BURNER**

Flattened, bulbous, with stepped domed and pierced cover, Fu-lion finial, curved upright handles and curved feet. (*Vines*).
Height, 17 inches

17" 82. **CHINESE BRONZE AND ENAMEL FLOOR LAMP**

Knobbed cylindrical shaft, bulbous base on tripod curved feet; decorated with enameled flowers and ornaments in colors on green ground. Fitted for electricity. Silk shade. (*Devlin*).

Height, 62 inches

37 1/2" 83. **CHINESE BRONZE INCENSE BURNER**

Rectangular, supported by lion's head and paw feet, straight shoulder, rectangular neck and cover, surmounted by molded figure of Fu-lion with young, curved upright loop handles; incised with archaic ornaments. (*Vines*).

Height, $16\frac{5}{8}$ inches

30" 84. **JAPANESE BRONZE INCENSE BURNER**

Quadrangular, with pine branch handles and elephant's head feet, and square base; surmounted by figure of Sage standing on clouds. Height, $28\frac{1}{2}$ inches

12 1/2" 85. **CHINESE BRONZE VESSEL**

Bulbous, with straight shoulder, tall funnel neck, having two cylindrical rings attached at lip, on flaring, cylindrical base; body and upper parts of neck engraved with archaic ornaments; high relief figures of dragons at neck. (*Vines*).

Height, $20\frac{1}{2}$ inches

40" 86. **PAIR BRONZE TABLE LAMPS**

Short baluster shaft supporting Chinese lantern, with pierced sides and mandarin's hat cover, on pierced Victorian bronze base, in grapevine design. Fitted for electricity. (*Vines*).

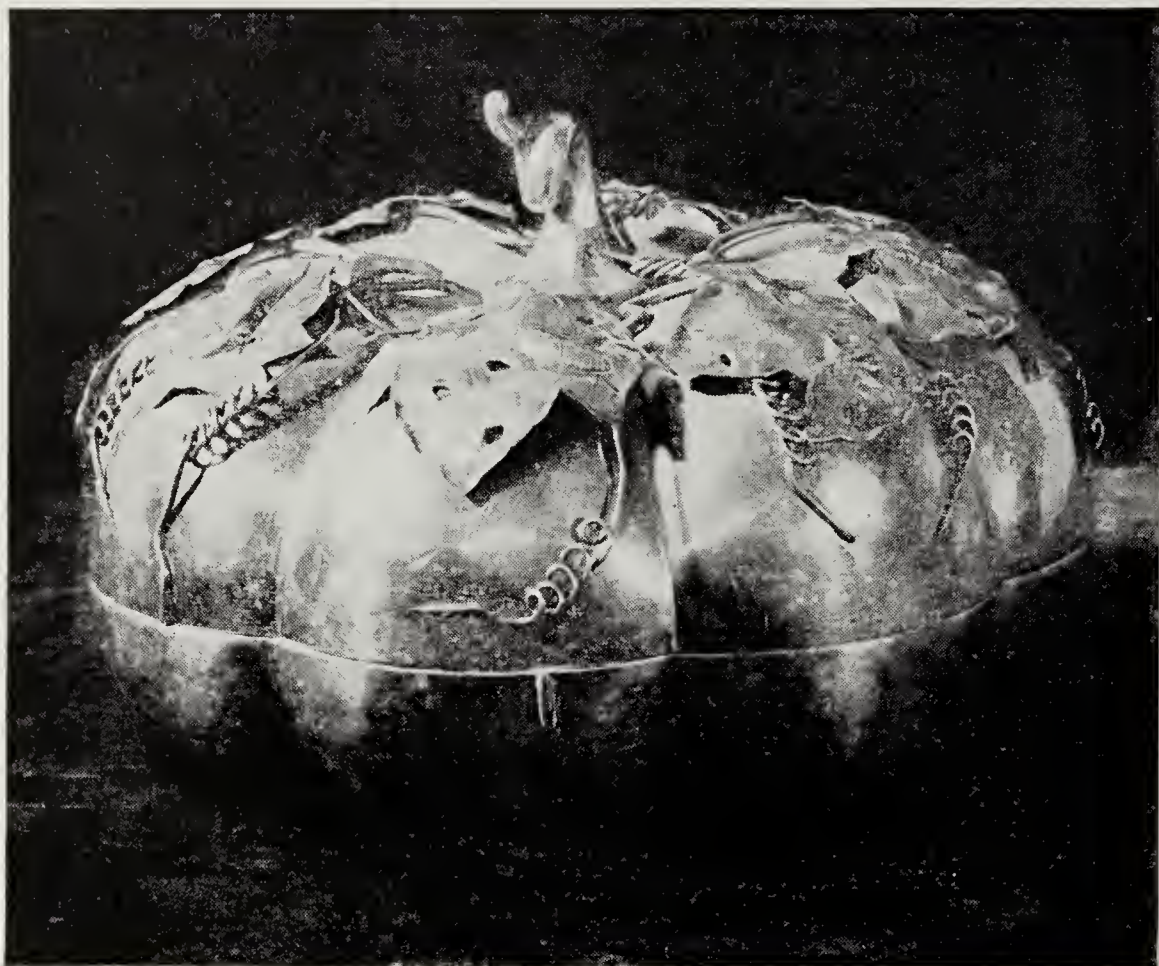
Height, $15\frac{1}{2}$ inches

22 1/2" 87. **CHINESE BRONZE INCENSE BURNER**

Flattened, bulbous, with incurvate shoulder and short neck, supported by three squatting figures, having dragon handles and pierced dome cover, terminating in monster; body and cover decorated with figures of dragons and other animals in high relief on engraved ground. (*Vines*).
Height, 16 inches

21" 88. **SEMI-PRECIOUS STONE CHINESE TABLE DECORATION**

Centerpiece and two candlesticks in shape of flowers, cut in jade and carnelian. (*Vines*).



89

50
89. **CHINESE SILVER COVERED HORS D'OEUVRES DISH**

In shape of a melon with looped stem as handle and decoration of naturalistically wrought and engraved leaves and insects at cover, opening to reveal nine small hors d'oeuvres dishes on detachable inset. (*Vines*).

Diameter, 11½ inches

[SEE ILLUSTRATION]



90

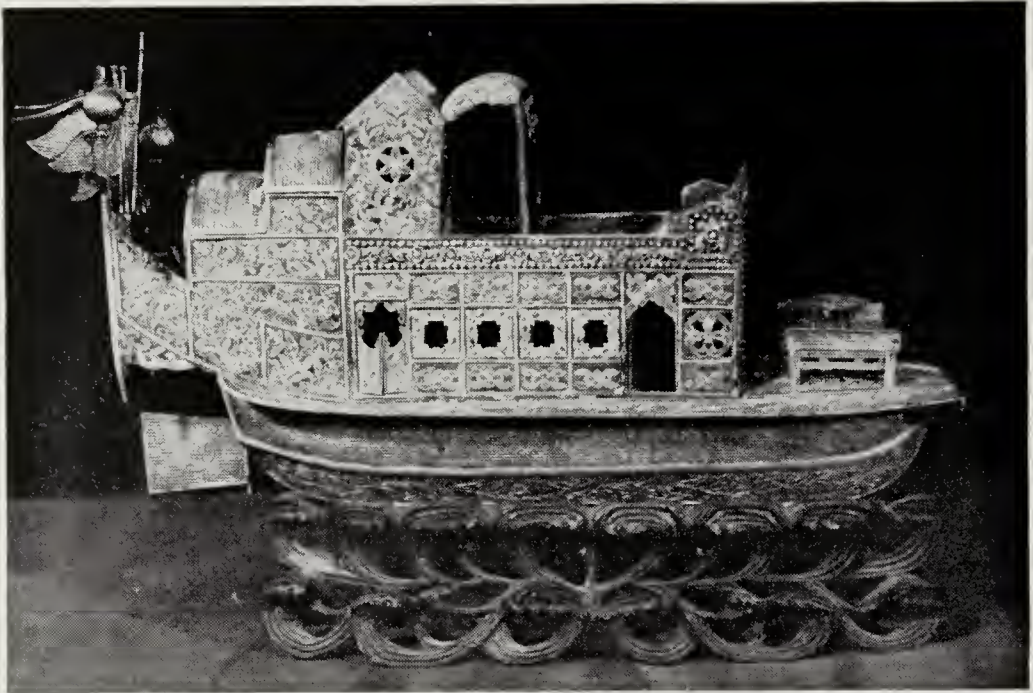
90. CHINESE SILVER AND ENAMEL MINIATURE HOUSE

House with gabled roof, flanked by two fruit trees, two garden pavillions, an arched canopy and fruit bowls, on a tray with bracket feet; of filigree work enriched with enameled ornaments and gilt and coral fruit. On carved and pierced teakwood stand. (*Vines*). Height, 7½ inches

[SEE ILLUSTRATION]

50 91. CHINESE SILVER AND ENAMEL AND CARVED IVORY VASE

Carved hexagonal ivory body, domed base with bracket feet, hexagonal shoulder with molded dragon handles, ringed, flaring, cylindrical neck with scalloped lip; base, handles and neck in silver finely enameled with scroll ornaments in colors. Together with miniature bronze and enamel ornament. (Vase in need of repair). (*Vines*). Height of vase, 12 inches



92

86- 92. **CHINESE SILVER AND ENAMEL HOUSEBOAT**

Of fine filigree work, partly enameled in turquoise and blue, having handsome details, such as table and chairs, porte-chaise, flags, etc. On curved and pierced teakwood stand. (*Vines*). Length, 11 inches

[SEE ILLUSTRATION]

11- 93. **THREE CHINESE NETSUKES**

Carved ivory Netsuke, representing a basket with mice; porcelain figure of a standing Sage invested with ivory glaze (imperfect); and carved bone figure of a squatting man. (*Brooks*).

10- 94. **TWO NETSUKES**

A carved fruitwood figure of a seated man; and a carved ivory group of a warrior and demon. (*Brooks*).

12- 95. **SET OF CHOP STICKS IN CASE**

Cylindrical carved bone case containing six ivory chop sticks. (*Brooks*).

4- 96. **CHINESE PAINTING ON GLASS**

River scene, with houses and figures in foreground and hilly background. Framed. (*Bostwick*). Height, 15½ inches; width, 24 inches

13- 97. **CARVED WOOD AND POLYCHROMED CHINESE FIGURE OF A DIGNITARY**

Figure in court robes and ornate head-dress, seated on a throne. (*Ming* chipped). Height, 9½ inches

12 1/2
21'
8'
11'
18'
10'
2 1/2'
21'
12'
11'
40'
10'
6'

98. **TIBETAN PICTURE**

Shiwa appearing with a golden halo over a stylized landscape, surrounded by Buddhist saints in clouds and a group of dancing maidens.

Height, 33 3/8 inches; width, 12 inches

99. **TWO JAPANESE SWORDS**

One having sharkskin covered hilt, in chased and partly gilt mountings, pierced suba in floral design and a metal scabbard; the other with curved sharkskin covered hilt, chased suba in scroll design, scabbard covered with sharkskin, bronze mountings. (*Vines*).

100. **THREE JAPANESE SWORDS**

In leather scabbards. (*Vines*).

101. **TWO JAPANESE SWORDS, DAGGER AND CHINESE TRAVELING KIT**

In sharkskin and wooden scabbards, with bronze mountings. (*Vines*).

102. **COLLECTION OF PEWTER OBJECTS**

Comprising six finger bowls, twenty-four liqueur cups, and a pair of candlesticks. Engraved with dragons. (32 pieces). (*Nealon*).

103. **CHINESE PEWTER FINGER BOWLS AND SAKI CUPS**

Twelve footed finger bowls and eighteen saki cups with seventeen saucers; all engraved with flowers and characters in medallions. (54 pieces). (*Nealon*).

104. **TWO CHINESE DECORATED GLASS SNUFF BOTTLES**

Cylindrical amber glass bottle with stopper, decorated with flowers and birds; and flattened shield-shaped clear glass bottle with short neck and jade stopper in silver mounting, decorated with flowers and birds in landscape. (*Vines*).

Heights, 2 7/8 and 5 1/2 inches

105. **TWO JADE AND ROCK CRYSTAL CHINESE SNUFF BOTTLES**

Flattened, hexagonal jade vessel, with pierced fret handles and egg-shaped smoke colored crystal bottle with short neck and green jade stopper. (*Vines*).

Heights, 1 7/8 and 2 1/8 inches

106. **THREE CHINESE FIGURES CARVED IN FRUITWOOD**

Pair reclining figures of bearded men, holding fish; and reclining figure of semi-nude woman, on teakwood stand. (*Nealon*).

Lengths, 5 5/8 and 6 1/2 inches

107. **FOUR CHINESE CARVED WOOD FIGURES**

Pair seated figures wearing pointed hats; and a pair of standing roosters. (Imperfect). (*Nealon*).

Heights, 2 7/8 and 3 1/2 inches

108. **PAIR CHINESE CLOISONNE VASES**

Slender, ovoid, with ringed mouth, dragon's head handles; allover decorated with blooming prunus branches in colors on yellow ground. (*Vines*).

Height, 10 inches

109. **PAIR CHINESE BLACK AND WHITE SILHOUETTE PICTURES**

Finely cut in black paper in floral and fan design. (*Vines*).

Height, 25 inches; width, 17 1/2 inches

110. **CHARACTER OF GOOD FORTUNE "FU"**

Written by the Empress Dowager, Tzu Hsi, on scarlet Imperial stationery with dragons. Framed.



112

111

112

26'-
27 1/2'
8
45

111. **CHINESE FOUR-FOLD GLASS AND TEAKWOOD TABLE SCREEN PLAQUE WITH PIETRA DURA**

High oblong panels with arched pierced teakwood frames; panels applied with figural scenes and flowers cut in carnelian, jade, rose quartz. (*Vines*).

Height, 15 inches

[SEE ILLUSTRATION]

112. **PAIR CHINESE GLASS TABLE SCREENS PLAQUES WITH PIETRA DURA**

High oblong panel on carved and pierced teakwood stand, applied with flowers and birds cut in amethystine, carnelian and jade. (*Vines*).

Height, 15 inches

[SEE ILLUSTRATION]

113. **TWO CHINESE TEAKWOOD TRAYS**

Both oblong with loop handles, one having black and white silhouette picture under glass (glass imperfect). (*Vines*).

Length, 24 3/4 inches

114. **TWO CHINESE ANCESTOR PAINTINGS**

Bust-length portraits of ladies, in jeweled head-dress and court robes. Framed. (*Wolf*).

K'ang Hsi

11 x 8 1/2 inches

30'
115. **CHINESE HAND SCROLL PAINTED ON SILK**

Containing twelve pictures of landscapes and text. (*Vines*).

Ch'ien Lung



116

116. **PAIR CINNABAR VASES**

Globular, with tapering cylindrical neck, elaborately carved with figural scenes in cartouches, scroll ornaments and stylized flowers. On teakwood stand. (*Vines*). *Height, 14 inches*

[SEE ILLUSTRATION]

117. **FOUR CHINESE DECORATED MILK WHITE GLASS PANELS**

High oblong milk-white glass panels, decorated with figures of warriors and inscriptions in enamel color. In teakwood frames. (*Vines*). *Height, 15 $\frac{1}{8}$ inches; width, 10 inches*

118. **PAIR PEKING MILK WHITE GLASS DECORATED VASES**

Ovoid, with flaring neck, molded handles; decorated with finely painted peonies and landscape in colors. On teakwood stands. (*Hotchkiss*). *Height, 5 $\frac{3}{4}$ inches*

175
675
30-

2752

119. **CHINESE CARVED SOAPSTONE GROUP MOUNTED AS A LAMP**
Flattened, ovoid vase, with elephant's head loose ring handles, behind group of various animals and figures. On pierced soapstone stand. Gilt bronze base. Fitted for electricity. Silk shades. (*Devlin*). *Height, 24 inches*

9"

120. **CHINESE PAINTING ON SILK** *Ming*
Depicting three standing figures of saints. (Imperfect). (*Wolf*). *27½ inches square*

15"

121. **PAIR CHINESE CLOISONNE VASES**
Club-shaped, with flaring neck and ringed lip; allover decorated in fish-scale pattern in black, turquoise and gold, and with fret medallions and ornamental petal border in colors. (Dented). (*Vines*). *Height, 9 inches*

16"

122. **NEPHRITE CARVED INCENSE BURNER**
Flattened, globular, with short neck, loop dragon head handles, paw feet, bell-shaped cover, terminating in pierced figure of dragon; body carved with archaic ornaments, cover engraved. (Chipped). (*Vines*). *Height, 7 inches*

30"

123. **CHINESE ENGRAVED AND DECORATED IVORY VASE**
Flattened, cylindrical, finely engraved and painted with figural scenes in landscapes. Teakwood stand. (Chipped). (*Vines*). *Height, 12¼ inches*

15"

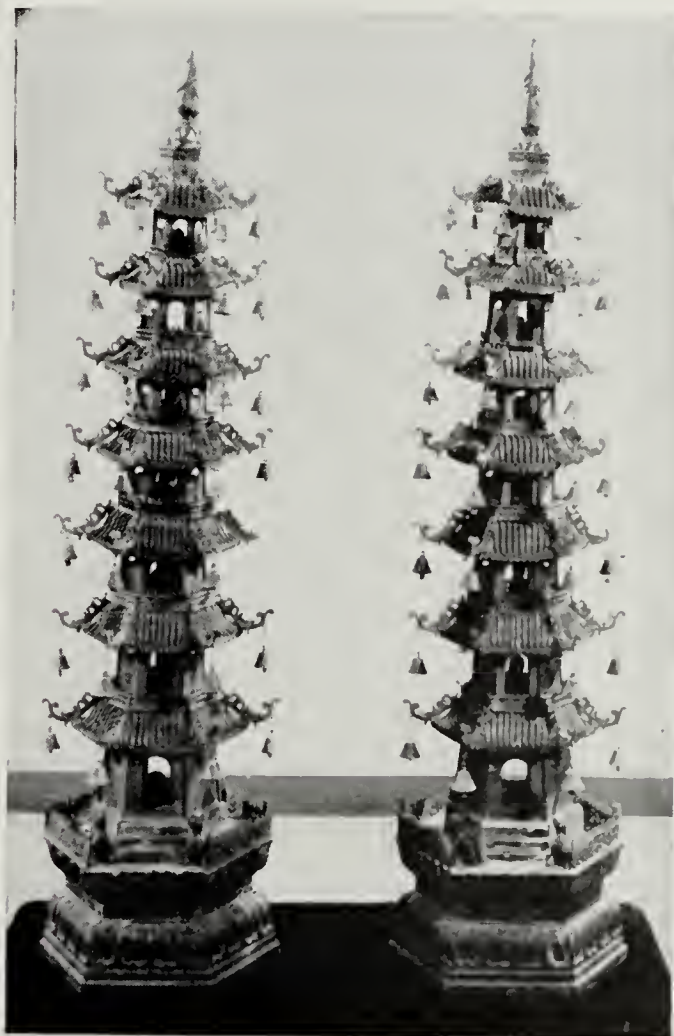
124. **CHINESE CARVED QUARTZ AND NEPHRITE VASE MOUNTED AS A LAMP**
Globular vase with dragon head handles on paw feet, carved with floral and leaf design, having nephrite cover with carved floral design mounted in bronze. On teakwood stand, bronze base. Fitted for electricity. Silk shade, jade finial (shade imperfect). (*New York Private Collector*). *Height, 26 inches*

80"

125. **CHINESE CARVED NEPHRITE VASE MOUNTED AS A LAMP**
Flattened, quadrangular vase, with Phoenix birds at sides and dragon head handles, carved with dragons, Phoenix birds and fret ornaments. Domed cover with Phoenix bird finial in pierced bronze mounting. On teakwood stand and bronze base. Fitted for electricity. Silk shade and jade finial. (shade imperfect). (*New York Private Collector*). *Height, 35 inches*

60"

126. **CHINESE CARVED NEPHRITE VASE MOUNTED AS A LAMP**
Flattened, ovoid, carved with fishes, water flowers, having domed cover in pierced bronze mounting. On teakwood stand, bronze base. Fitted for electricity, silk shade, jade finial. (Imperfect). (*New York Private Collector*). *Height, 33 inches*



127

75-
127. PAIR CHINESE CAST IRON PAGODAS

Seven-tier pagoda in three detachable sections; on hexagonal base with pierced gallery and figures of dragons; figures of seated Buddhas in some sections; corners of roofs hung with bells; pointed finial. (*Vines*).

Height, 56½ inches

[SEE ILLUSTRATION]



133
129

130
132

131
128

FINE JADES AND CARVINGS

128. CARVED SOAPSTONE FIGURE OF A DEITY

Figure of a Deity in loose robe, holding up a bottle, mounted on a stylized Fu-lion; on domed, pierced and stained soapstone base. (*New York Private Collector*). *Ch'ien Lung*
Height, 8½ inches

[SEE ILLUSTRATION]

129. CARVED SOAPSTONE FIGURE OF A DEITY

Similar to preceding. (*New York Private Collector*). *Ch'ien Lung*
Height, 8¾ inches

[SEE ILLUSTRATION]

130. CHINESE CARVED RHINOSEROS HORN LIBATION CUP

In shape of a blossom, entwined with blooming branches. On carved and pierced teakwood stand. (*New York Private Collector*). *Ch'ien Lung*
Height, 3 inches

[SEE ILLUSTRATION]

1250
12
3150

25'-
35'-
30'-
18'-
17 1/2"
27 1/2"
25'-
30'-
30'-
30'-
131. CHINESE CARVED AMETHYST QUARTZ LOTUS BOWL

Lotus flowers and leaves and two ducks around a lotus blossom. On carved and pierced teakwood stand. (*New York Private Collector*).

Length, 4 5/8 inches

[ILLUSTRATED ON OPPOSITE PAGE]

132. CHINESE CARVED ROCK CRYSTAL FIGURE

Standing figure of a woman holding fly whisk and fruit. (*New York Private Collector*).

Height, 8 7/8 inches

[ILLUSTRATED ON OPPOSITE PAGE]

133. CHINESE CARVED AMETHYST QUARTZ GROUP

Three sheep grouped about a rock. On carved and pierced teakwood stand. (*New York Private Collector*).

Height, 4 5/8 inches

[ILLUSTRATED ON OPPOSITE PAGE]

134. CARVED AMBER FIGURE OF A DOG

On rectangular base. (*New York Private Collector*).

Length, 4 1/8 inches

135. CHINESE CARVED AGATE BOWL AND SOAPSTONE FIGURE

Bell-shaped bowl, supported by two figures; and a carved soapstone figure of a seated Fu-lion. One has teakwood stand. (*New York Private Collector*).

Heights, 1 7/8 and 3 7/8 inches

136. TWO CHINESE MUTTON FAT JADE CARVINGS

Ch'ien Lung

One, a pair of reclining dogs, the other depicting hilly landscape carved in low relief. Both on teakwood stands. (*New York Private Collector*).

Lengths, 2 3/4 and 3 3/4 inches

137. CHINESE CARVED RHINOCEROS HORN LIBATION CUP

Ch'ien Lung

Carved with landscapes with rocks and trees, scattered houses and figures. On carved and pierced teakwood stand. (*New York Private Collector*).

Height, 4 1/4 inches

138. CHINESE CARVED MUTTON FAT JADE BOWL

Ch'ien Lung

In shape of a lotus leaf with a frog and two snails perched on it; lotus flower under foot. On carved and pierced teakwood stand. (*New York Private Collector*).

Length, 4 3/4 inches

139. CHINESE CARVED MUTTON FAT JADE BOWL

Ch'ien Lung

In shape of a curving lotus leaf, surrounded by lotus blossoms and buds and a small frog squatting at the edge. On carved and pierced teakwood stand. (*New York Private Collector*).

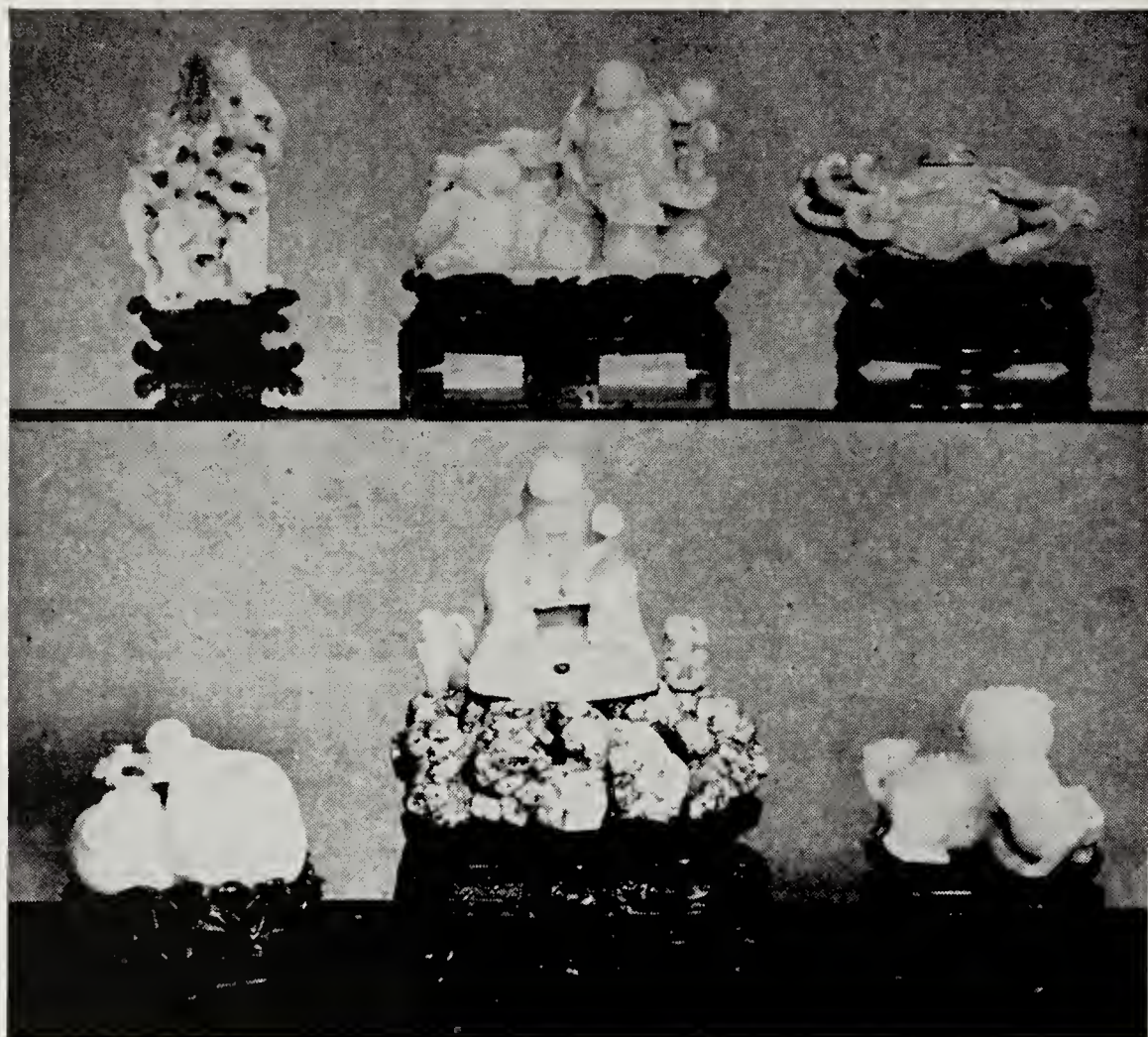
Length, 5 1/4 inches

140. TWO CHINESE CARVED MUTTON FAT JADE FIGURES

Ch'ien Lung

Standing figure of a laughing boy, carrying a dog; and squatting figure of a boy. Both figures on one teakwood stand. (*New York Private Collector*).

Heights, 1 3/8 and 3 1/8 inches



146
141

145
142

144
143

150' 141. CHINESE CARVED MUTTON FAT JADE GROUP

Ch'ien Lung

Group composed of two resting water buffalos and a small boy climbing over them, holding a bunch of flowers. On carved and pierced teakwood stand. (*New York Private Collector*).

Height, 4 inches

[SEE ILLUSTRATION]

98' 142. CHINESE CARVED MUTTON FAT JADE AND MALACHITE GROUP

Ch'ien Lung

Seated figure of a smiling sage, holding a fruit and sceptre, flanked by small figure of a woman and figure of a monkey; on an irregular malachite rocky base. Carved teakwood stand. (*New York Private Collector*).

Height, 7 1/8 inches

[SEE ILLUSTRATION]

10'
143. CHINESE CARVED MUTTON FAT JADE FU LION GROUP

Figure of a Fu-lion with young. On carved and pierced teakwood stand. (New York Private Collector). Length, 4¾ inches

[ILLUSTRATED ON OPPOSITE PAGE]

90'
144. CHINESE CARVED MUTTON FAT JADE COUPE, WITH COVER

Ch'ien Lung

In shape of a fruit entwined with undercut blooming branches, with circular carved cover of flowers. On carved and pierced teakwood stand. (New York Private Collector). Length, 5⅞ inches

[ILLUSTRATED ON OPPOSITE PAGE]

65'
145. CHINESE CARVED MUTTON FAT JADE GROUP

Ch'ien Lung

Standing figure of a deity, holding a disk and a flower branch, looking down at a squatting figure, with a frog on the shoulder and a basket beside him. On a base of clouds. Carved and pierced teakwood stand. (New York Private Collector). Length, 5⅞ inches

[ILLUSTRATED ON OPPOSITE PAGE]

55'
146. CHINESE CARVED MUTTON FAT JADE MOUNTAIN

Ch'ien Lung

Irregular rocky crags overgrown in intervals with fruit trees; two sages standing at the bottom. On carved teakwood stand. (New York Private Collector). Height, 5¼ inches

[ILLUSTRATED ON OPPOSITE PAGE]

FURNITURE, SCREEN, PANELS

A MINIATURE TEMPLE

2250
147. CHINESE CARVED TEAKWOOD MIRROR

Carved panels at both sides, depicting figural scenes, enclosing bevelled mirror. (Vines). Height, 20½ inches; width, 44¼ inches

20
58
148. CHINESE CARVED AND PIERCED TEAKWOOD FOUR-TIER ETAGERE

Cone-shaped, with pierced and carved backboard and supports, on claw feet, having vase finial. (In need of repair). (Vines). Height, 5 feet 9 inches

3250
149. TEAKWOOD CARVED TEA WAGON

Oblong, having glassed compartment above shelf, on wheels; carved in bamboo design. (Vines). Height, 31 inches; length, 25 inches

10'
150. PAIR CHINESE CARVED TEAKWOOD STANDS

Shaped tre-foil top with marble inset, deep apron, curved legs, connected by stretcher; richly carved and pierced in floral design. (In need of repair). (Vines). Height, 32½ inches

151. CHINESE CARVED TEAKWOOD STAND

Square top, cylindrical shaft, tripod curved legs, elaborately carved with flowers and birds. (Vines). Height, 58 inches



154

65"
85"
100"
152. **PAIR CHINESE TEAKWOOD CARVED TABLES**

Circular, scalloped top, with marble inset, deep carved and pierced apron, carved cabriole legs on claw and ball feet, connected by undershelf. (In need of repair). (*Vines*). *Height, 31 $\frac{3}{4}$ inches; diameter, 26 inches*

153. **FOUR CHINESE CARVED TEAKWOOD SIDE CHAIRS**

Oblong back and seat, curved feet joined by stretcher; carved and pierced in bamboo design. (In need of repair). (*Vines*).

154. **CHINESE LACQUER PANEL PLAQUE, WITH PIERTA DURA**

Black lacquer applied in green and white jade, carnelian and rose quartz, with various figures and blooming trees and branches in low relief, and Chinese characters. Teakwood frame. Glassed. (*Vines*).

Height, 59 inches; width, 27 $\frac{3}{4}$ inches

[SEE ILLUSTRATION]



155

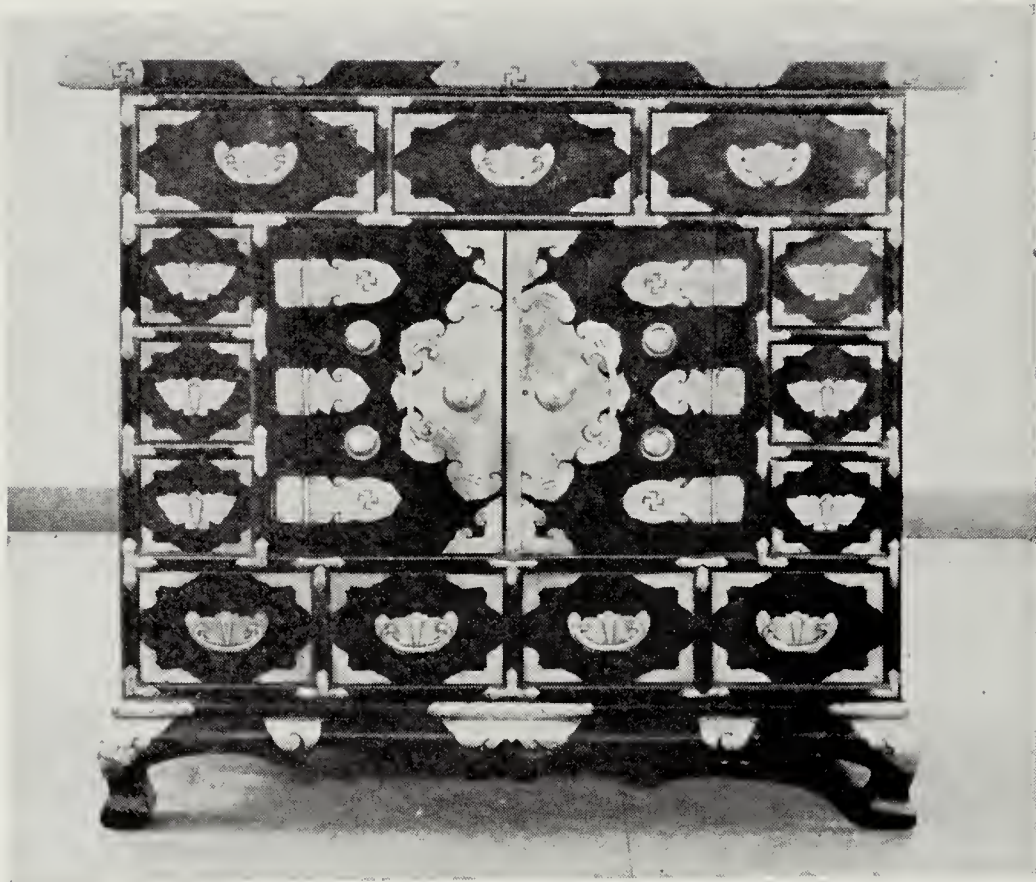
- 50 -
155. CHINESE LACQUER PANEL PLAQUE, WITH PIERTA DURA
Similar to preceding. En suite with preceding. (*Vines*).

[SEE ILLUSTRATION]

- 10 -
156. CHINESE LACQUER PANEL PLAQUE, WITH PIERTA DURA
Similar to preceding. En suite with preceding. (Glass cracked). (*Vines*).

- 15 -
157. CHINESE LACQUER PANEL PLAQUE, WITH PIERTA DURA
Similar to preceding. En suite with preceding. (*Vines*).

- 5 -
158. CHINESE CARVED TEAKWOOD TABLE
Circular top with scalloped edge, red marble inset, cylindrical shaft, tripod,
curved legs on paw feet; allover elaborately carved and pierced with trees
and flowers. (*Vines*). Height, 35 inches: diameter, 25 inches



159

190-
159. **CHINESE BLACKWOOD CABINET**

Oblong top, three drawers at top, two drawers at bottom, enclosing two-door cupboard flanked by simulated drawers; shaped skirt on curved quadrangular legs; richly mounted in engraved brass hinges, draw-pull, corner mountings, having hinged handles. (*Vines*). Height, $42\frac{3}{4}$ inches; width, 48 inches

[SEE ILLUSTRATION]



160

105'-
160. **CHINESE TEAKWOOD CABINET**

In two sections; arched upper part having two doors, fitted with shelves on various levels; lower part, fitted with two drawers above two doors; all over carved to simulate bamboo; brass draw-pulls and locks. (*Vines*).

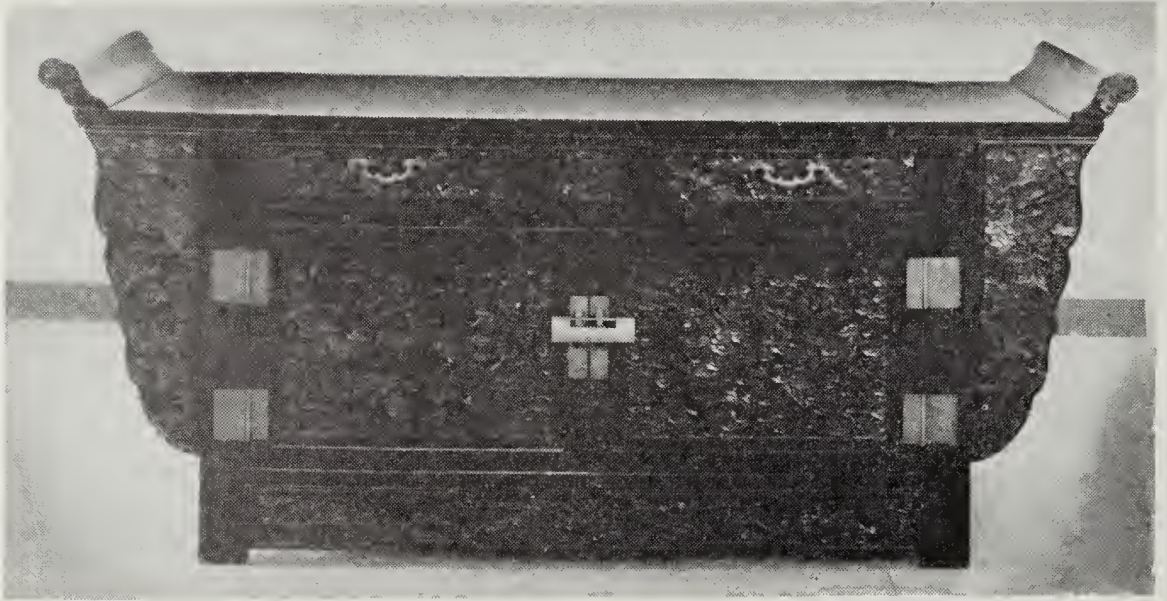
Height, 6 feet 1 inch; width, 33½ inches

[SEE ILLUSTRATION]

95'-
161. **CHINESE CARVED TEAKWOOD DESK**

Oblong, slant front, surmounted by recessed upper section, having compartments, flanked by two cupboards, stationary shelves and drawers; cabriole legs; all-over elaborately carved with pierced dragons, flowers and various ornaments. (In need of repair). (*Vines*).

Height, 64 inches; width, 46¾ inches



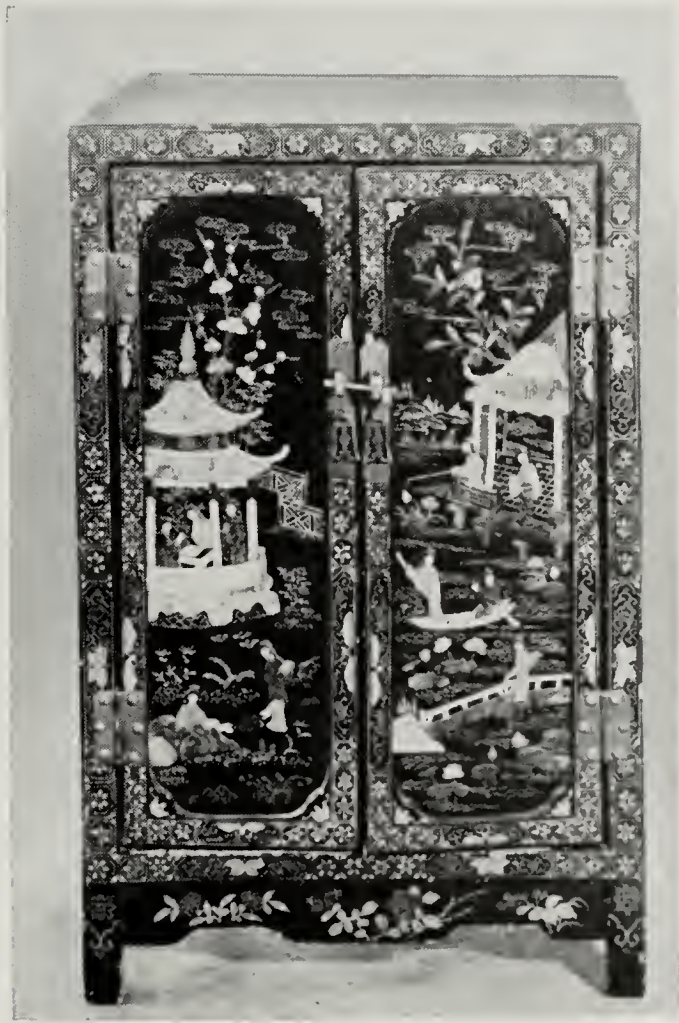
162

250-
162. CHINESE CARVED TEAKWOOD SIDEBOARD

Oblong top, with carved upright scroll ends, two drawers above two-door cupboard, flanked by curved panels; base, doors and drawers elaborately carved with dragons and flowers, brass draw-pulls, hinges and locks. (*Vines*).

Length, 6 feet; height, 37 inches

[SEE ILLUSTRATION]



163

- 10-
163. **CHINESE LACQUER AND INLAID CABINET PLAQUE WITH PIERTA DURA**
 High, oblong cabinet, having two doors, revealing shelf, shaped skirt and quad-
 rangular legs; inlaid with floral design in mother-of-pearl, painted with leaves
 and flowers; door panels and sides plaque with figural scenes in landscapes,
 and blooming trees and birds in rose quartz, carnelian and white and green jade.
 (*Vines*). *Height, 32 inches; width, 21 inches*

[SEE ILLUSTRATION]



164

- 240 -
164. **CHINESE LACQUER AND INLAID CABINET PLAQUE WITH PIERTA DURA**
 High, oblong cabinet, having two doors above two drawers on flattened quadrangular feet; allover richly inlaid with mother-of-pearl in geometrical design and finely painted at front and sides with flowers, blooming branches and birds, door panels plaque with emblems of "The Thousand Antiques", vases and flowers in soapstone and various semi-precious stones. Brass hinges and door lock. (*Vines*). *Height, 54 inches; width, 36 $\frac{1}{4}$ inches*

[SEE ILLUSTRATION]



165

240 -
165. CHINESE LACQUER AND INLAID CABINET PLACQUE, WITH PIERTA
DURA

Similar to preceding. En suite with preceding. (*Vines*).

[SEE ILLUSTRATION]

675
166. **UNIQUE MINIATURE REPLICA OF A CHINESE TEMPLE IN JEHOL PROVINCE**

Early XIX Century

Wood carved, gilt and lacquered temple with double winged roofs, terminating in arched gallery, having pierced railing and resting on two-door cabinet with paneled sides, enriched with decorated mirror panels, carved base, claw feet; all over richly decorated with floral and figural ornaments of carved fruitwoods and ivory; two detachable altars with elaborate lead altar sets and four lead chandeliers in the niches of the temple; a collection of various pewter arms and flags behind the railing; a number of lanterns with silk tassels hung from the roofs; and a variety of finely carved fruitwood groups, representing various characters of the Buddhistic legend. (Some small imperfections). (*Vines*).

Height, 10 feet 6 inches; width, 41 inches

Note: The above described temple is an outstanding example of the architecture of the so-called Chinese "Rococo" and a superb example of fine Chinese craftsmanship.

[ILLUSTRATED ON OPPOSITE PAGE]

4750
167. **FOUR CHINESE WOOD CARVED AND POLYCHROMED FIGURES OF ACTORS**

Early XIX Century

Pair larger and pair small figures of actors in elaborate gilt and decorated costumes, holding various utensils. On irregular base. (*Vines*).

Heights, 16 and 14 inches

50
168. **THREE CHINESE FIGURES OF ACTORS**

Early XIX Century

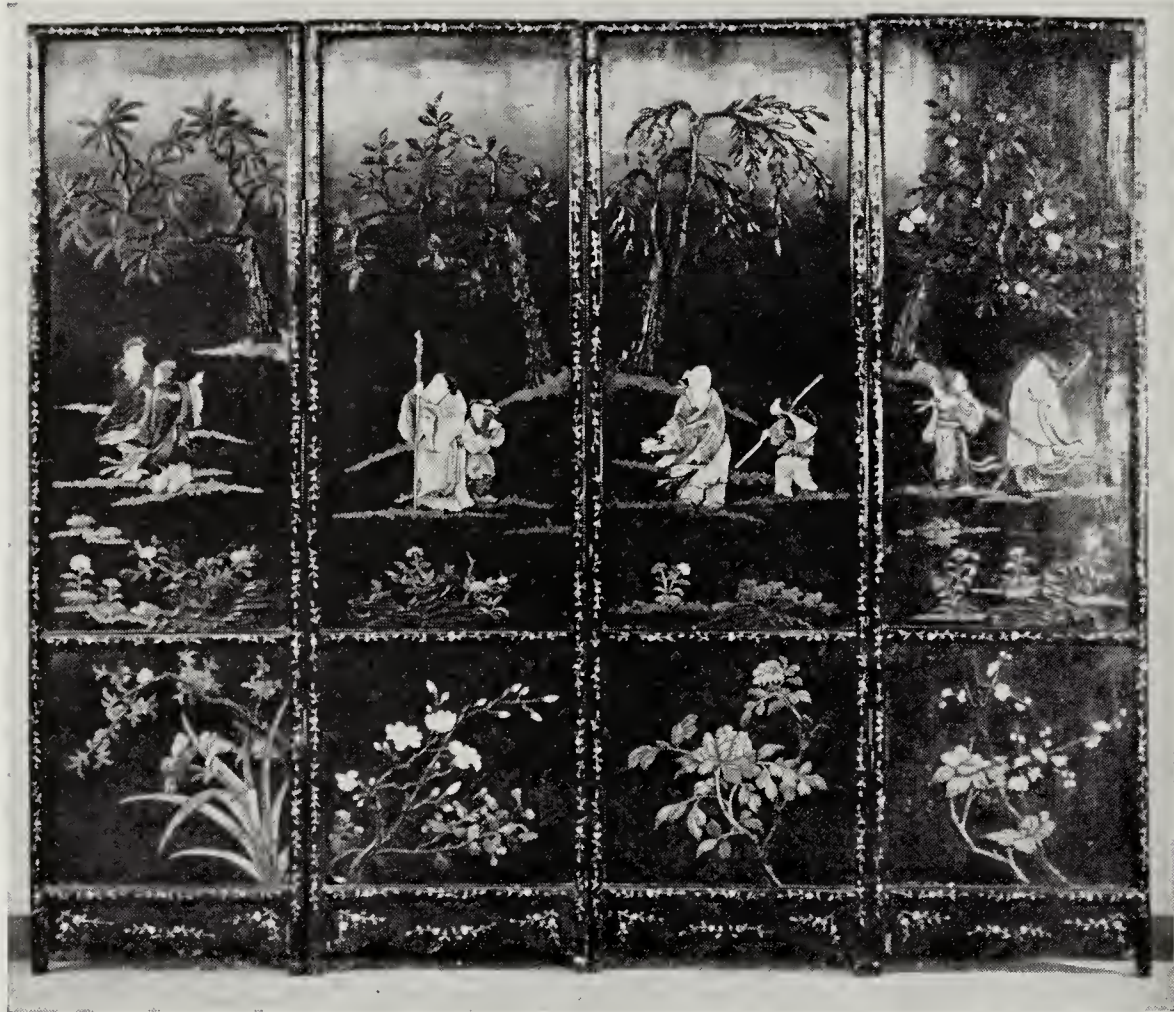
Wood carved and polychromed figures of bearded men in elaborate silk and embroidered costumes with high head-dresses; seated on carved and gilt thrones with covers and seat cushions. (*Vines*).

Heights, 12 and 20½ inches



166

41



169

169. IMPORTANT CHINESE BLACK LACQUER FOUR-FOLD SCREEN PLAQUE,
WITH PIERTA DURA

Early XIX Century

High, oblong panel, divided in two sections, on shaped base, quadrangular legs; upper section of panel depicting figural scenes, trees and flowers, lower section blooming branches; black lacquer applied in carnelian, green jade, soapstone and mother-of-pearl; frames inlaid with flowers in mother-of-pearl; back showing Chinese inscriptions in gold. (*Vines*).

Height, 6 feet 6 inches; width, open, 4 feet 8 inches

[SEE ILLUSTRATION]

TEXTILES AND RUGS

170. **INDIAN SILK SARI**
Of red and black satin with gold thread border on one end, blocked in geometrical and figural pattern. (*New York Private Collector*).
Length, 7 feet 4 inches; width, 5 feet
171. **INDIAN SILK SARI**
Similar to preceding. (*New York Private Collector*).
Length, 13 feet; width, 4 feet
172. **KASHMIR SHAWL**
Black center and allover design of large palmettes; woven in blue, red, green, yellow and black. (*Brooks*).
173. **CHINESE EMBROIDERY**
Depicting the Hundred Birds, exquisitely executed in colors on light blue ground. Fringed borders.
174. **INDIAN HAND EMBROIDERED MAT**
Center panel of allover floral and geometrical design in red, blue, orange, green and tan on ivory ground. Fringed borders.
175. **ISPAHAN HAND EMBROIDERED MAT**
Double center panel of floral and leaf design, having outer border of rosettes in rust, blue, brown and green.
176. **BOKHARA HAND EMBROIDERED SADDLE COVER**
Allover geometrical pattern in rust and dark blue on ivory ground.
177. **INDIAN WOVEN MAT**
Allover geometrical design in red, green, white, blue and black on wine ground. Having fringed borders.
178. **CHINESE EMBROIDERY**
Center of vertical strips embroidered in floral design in rose, blue and green on black ground. Tangerine silk border.
179. **CHINESE EMBROIDERY**
Center square of allover floral embroidery in red, green, blue and puce and having red silk borders.
180. **PERSIAN EMBROIDERY**
Center field of embroidered floral medallions and center cartouches in colors of rose, blue, yellow, black and lavender. Spandrels and sides of floral and leaf design in similar colors. Embroidered on suede. (*Stained*).

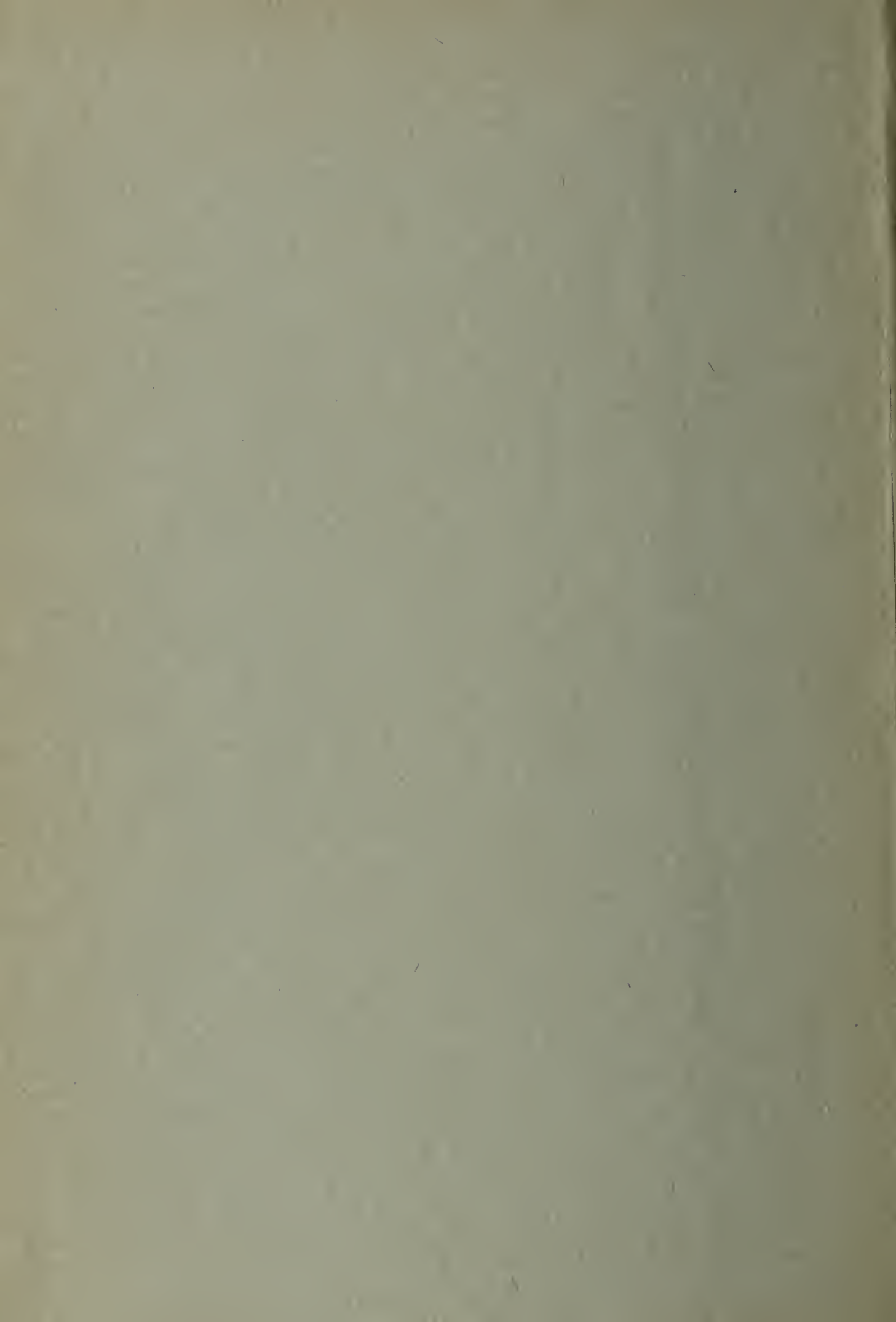
- 45-
- 27⁵⁰
- 32⁵⁰
- 92⁵⁰
- 42⁵⁰
- 57⁵⁰
- 32⁵⁰
- 65
- 350-
- 185-
- 81⁵⁰
181. **TURKISH BROCADE AND EMBROIDERED HANGING**
Gold velvet center panel with embroidered rosettes in green and lavender with a bright blue border, having gold star design. Two adjacent borders, the inner one of red brocade on ivory ground and the outer one of geometric design, heavily embroidered in silver thread.
Length, 7 feet 1 inch; width, 5 feet 8 inches
182. **CHINESE RUG**
Panel of geometrical and floral design in tones of blue and rose on gold ground. Floral and stylized leaf border in similar colors.
Length, 4 feet; width, 2 feet
183. **CHINESE RUG**
Center panel of vase and floral design in blue and gold on blue ground. Floral, vase and scrolling branch design at border.
Length, 4 feet 10 inches; width, 2 feet 3 inches
184. **CHINESE RUNNER**
Landscape, tree and bird motifs at either end in light and dark blue, orchid, yellow and brown on orchid ground.
Length, 14 feet 2 inches; width, 2 feet 7 inches
185. **CHINESE RUG**
Center panel of vase and floral motif in yellow, rose and blue on blue ground. Border of vase and floral design in similar colors.
Length, 4 feet 10 inches; width, 2 feet 8 inches
186. **CHINESE RUG**
Centering vase and flag design with four corners of vase and flower design in brown, rose, blue and orange on bright blue ground. Border of large floral and scrolling leaf design in similar colors.
Length, 5 feet 8 inches; width, 4 feet
187. **CHINESE RUG**
Panel of floral spot designs centering geometric cartouche and having geometrical corners in colors of gold and light blue on dark blue ground. Floral border of similar colors.
Length, 4 feet 3 inches; width, 2 feet 5 inches
188. **CHINESE RUG**
Allover geometrical design in mustard, orange and blue on rich dark blue ground.
Length, 4 feet 5 inches; width, 3 feet 7 inches
189. **CHINESE RUG**
Allover geometrical design in mustard, orange and blue on rich dark blue ground.
Length, 16 feet; width, 8 feet
190. **CHINESE RUG**
Center field with floral and vase designs and border of floral, leaf and geometrical design in rose, blue and green on dark blue ground.
Length, 10 feet; width, 8 feet
191. **KHILIM RUG**
Allover large geometrical design in brown, orange, grey, white on rose ground. Geometrical border in similar color.
Length, 13 feet 10 inches; width, 10 feet

END OF SALE





NOV 2 1914



THE METROPOLITAN
MUSEUM OF ART

Thomas J. Watson Library

